

Read and understand this entire manual carefully before assembling or using this water filter. Keep this manual for future reference. If you do not understand this manual or have any questions, please call Cascade Designs at 1-800-531-9531.

IMPORTANT

READ, UNDERSTAND, AND FOLLOW ALL INSTRUCTIONS AND WARNINGS in this manual before using this filter. Failure to follow warnings and instructions may result in gastrointestinal illness.

Keep potentially contaminated parts away from filtered water to prevent cross contamination. Never use the HyperFlow Gravity Kit to filter seawater or chemically contaminated water, such as water from mining tailing ponds or near large agricultural operations. The HyperFlow Gravity Kit does not make drinkable water from these sources and does not remove all viruses, chemicals and radioactive materials, or particles smaller than 0.2 microns.

YOU ARE RESPONSIBLE FOR YOUR OWN SAFETY AND THE SAFETY OF THOSE IN YOUR GROUP. PLEASE USE GOOD JUDGMENT.

There are hazards associated with backcountry travel and the use of water filters. Drinking untreated water may expose you to harmful microorganisms and increase your risk of gastrointestinal illness. Using this filter improperly increases your risk of exposure to harmful microorganisms and increases your risk of gastrointestinal illness. Reduce your chances of becoming sick by following the warnings and instructions in this manual and educating yourself on backcountry water safety.

BIOLOGICAL HAZARD

WARNING

INSTRUCTION MANUAL



HYPERFLOW™ GRAVITY KIT

MSR®
MOUNTAIN SAFETY RESEARCH®

Please refer to the MSR® HyperFlow™ Microfilter instruction manual or visit www.msrgear.com for information about the operation, care, maintenance, and any problems related to the pump.

Problem	Cause	Solution
Leaking Female Quick Disconnect	Clogged Female Quick Disconnect	Clean Female Quick Disconnect
Decreased/no water flow	Clogged Pre-Filter Screen	Clean Pre-Filter Screen
Clogged filter	Backflush Filter Cartridge (See HyperFlow Microfilter instruction manual)	Backflush Filter Cartridge (See HyperFlow Microfilter instruction manual)
Kinked hose	Straghten hose	Straghten hose
Disengaged Male Quick Disconnect	Push Male Quick Disconnect in fitting completely	Push Male Quick Disconnect in fitting completely
Closed Shut-off Clamp	Open Shut-off Clamp	Open Shut-off Clamp

TROUBLESHOOTING

TIPS

Water Collection and Preparation

Use the cleanest, clearest water available. Avoid filtering silty, cloudy, muddy, or glacial stream water or tea-colored water that contains visible tannins because these sources will quickly clog the filter. If clear water is not available, then let particles settle before filtering. Fill the Dirty Collection Reservoir with water and let the water stand until particles have settled to the bottom. Periodically, clear the Pre-Filter Screen behind the Female Quick Disconnect. To treat water with suspected waterborne viruses, use an approved disinfectant. Follow the manufacturer's recommendation for its use. Information on disinfectant use can be found on the Centers for Disease Control Web site: www.CDC.gov.

Operation

To maximize water flow, hang the Dirty Collection Reservoir as high as possible without putting tension on the Inlet Hose or pulling the clean container off the ground.

Please refer to the MSR® HyperFlow™ Microfilter instruction manual or visit www.msrgear.com for information.

HyperFlow Filter Cartridge

Reservoir Spout (Platypus® Hoser™, most water bottles)

Push Outlet Adapter into Reservoir Spout. After the water is filtered and collected, close cap on bottle.

Drink Tube (Platypus®, CamelBak® hands-free hydration systems)

Remove the Bite Valve and store in a clean place. Remove Clean Side Cover and install Hydration Drink Tube onto the Outlet Nipple. Follow **Steps 1-3** (instruction manual). After the water is filtered and collected, reinstall Bite Valve.

Alternate Collection Methods

To avoid cross contamination when filtering water, MSR recommends these collection methods:

Quick Connect™ Bottle Adapter (MSR® Dromedary™ Bag, Nalgene® bottles)

Replace the cap on the Dromedary Bag with the Quick Connect™ Bottle Adapter. Remove Clean Side Cover. Remove Bottle Adapter and connect Outlet Adapter to the Quick Connect Bottle Adapter. Install Clean Side Cover onto Bottle Adapter Plug. Follow **Steps 1-3** (instruction manual). After the water is filtered and collected, close the Bottle Adapter Plug.

Quick Connect™ Bottle Adapter

Remove the cap on the Dromedary Bag with the Quick Connect™ Bottle Adapter. Remove Clean Side Cover. Remove Bottle Adapter and connect Outlet Adapter to the Quick Connect Bottle Adapter. Install Clean Side Cover onto Bottle Adapter Plug. Follow **Steps 1-3** (instruction manual). After the water is filtered and collected, close the Bottle Adapter Plug.

Reservoir Spout (Platypus® Hoser™, most water bottles)

Push Outlet Adapter into Reservoir Spout. After the water is filtered and collected, close cap on bottle.

RESERVOIR SPOUT

DRINK TUBE

QUICK CONNECT™ BOTTLE ADAPTER

**LIMITED WARRANTY/LIMITATIONS OF REMEDIES AND LIABILITY
USA and Canada**

Limited Warranty. Cascade Designs, Inc. ("Cascade"), to the original owner ("Owner"), under intended use and maintenance, warrants the enclosed product ("Product") to be free from defects in materials and workmanship for the life of the Product. No warranty against defects in materials and workmanship will apply if Product is (i) altered in any way, (ii) used for purposes inconsistent with Product's intended purpose or design, or (iii) improperly maintained. Warranty will furthermore be voided where Owner/user (i) failed to follow Product instructions or warnings or (ii) subjected Product to misuse, abuse, or neglect.

During the warranty period, original Product parts determined by Cascade to be defective in materials or workmanship will be repaired or replaced as Owner's sole remedy. Cascade reserves the right to replace any discontinued product with a new product of comparable value and function. A returned product deemed irreparable becomes the property of Cascade and will not be returned.

EXCLUDING THE LIMITED WARRANTY PROVIDED ABOVE, CASCADE, ITS AFFILIATES AND THEIR SUPPLIERS, TO THE MAXIMUM EXTENT PERMITTED BY LAW, MAKE NO WARRANTIES, EXPRESSED OR IMPLIED, AND DISCLAIM ALL WARRANTIES, DUTIES AND CONDITIONS, WHETHER EXPRESSED, IMPLIED OR STATUTORY, WITH RESPECT TO THE PRODUCT, INCLUDING WITHOUT LIMITATION ANY IMPLIED WARRANTIES OF MERCHANTABILITY, AGAINST LATENT DEFECTS, FITNESS FOR A PARTICULAR PURPOSE, OR CORRESPONDENCE TO DESCRIPTION.

Warranty Service. To obtain service under this warranty, the warranty-eligible Product must be presented to a Cascade authorized dealer. In the United States and Canada, warranty service may also be obtained by calling 1.800.531.953 [M - F, 8:00 a.m. - 4:30 p.m., PDT]. Owner is responsible for all costs associated with returning Product to Cascade for service. Where at its sole discretion Cascade deems Product eligible for warranty repair or replacement, Cascade will pay the shipping and handling associated with returning repaired or replaced Product to Owner. In instances where Cascade deems a returned product ineligible for warranty service, Cascade will, if possible, repair product for a reasonable charge that includes return shipping and handling. For warranty return service details, please go to www.msrgear.com.

Limitation of Remedies. Should a court of competent jurisdiction find the limited warranty set forth above breached, Cascade's only obligation will be to, at its option, either repair or replace Product. Should the aforementioned remedy fail of its essential purpose, Cascade will, in exchange for return of Product, refund to Owner Product's original purchase price. THE FOREGOING REMEDY IS THE SOLE AND EXCLUSIVE REMEDY OF THE PURCHASER AGAINST CASCADE, ITS AFFILIATES AND THEIR SUPPLIERS, REGARDLESS OF LEGAL THEORY.

Limitation of Liability. Cascade's, its affiliates' and their suppliers' maximum liability is limited to incidental damages not to exceed the original purchase price of the Product. CASCADE, ITS AFFILIATES AND THEIR SUPPLIERS HEREBY DISCLAIM AND EXCLUDE ANY LIABILITY FOR ANY CONSEQUENTIAL OR OTHER DAMAGES RESULTING FROM ANY REASON WHATSOEVER. THIS EXCLUSION AND LIMITATION APPLIES TO ALL LEGAL THEORIES UNDER WHICH DAMAGES MAY BE SOUGHT, AND WILL APPLY EVEN IF ANY REMEDY FAILS OF ITS ESSENTIAL PURPOSE.

This limited warranty gives Owner specific legal rights; Owner may have additional rights, which may vary state to state.

Always completely follow safety, use, operation, and maintenance instructions for this or any other Cascade product.

European Union customer statutory rights are not affected.

For product service and information contact

Cascade Designs, Inc.
4000 First Avenue South, Seattle, WA 98134 USA
1-800-531-9531 or 206-505-9500

Cascade Designs, Ltd.
Dwyer Road, Middleton, County Cork, Ireland
(+353) 21-4621400

www.msrgear.com

SPECIFICATIONS

Kit Contents	Dirty Collection Reservoir (with built-in Female Quick Disconnect fitting) Male Quick Disconnect fitting Shut-off Clamp Instruction Manual Storage Sack IMPORTANT: The MSR® HyperFlow™ Gravity Kit is designed for use with the MSR® HyperFlow™ Microfilter, which is sold separately.
Weight	6 oz. / 169 g
Dimensions	11 x 2 in. / 28 x 5 cm
Flow Rate	0.45 liters per min.
Patents	Patents pending

MSR®
MOUNTAIN SAFETY RESEARCH®

For product information and service contact

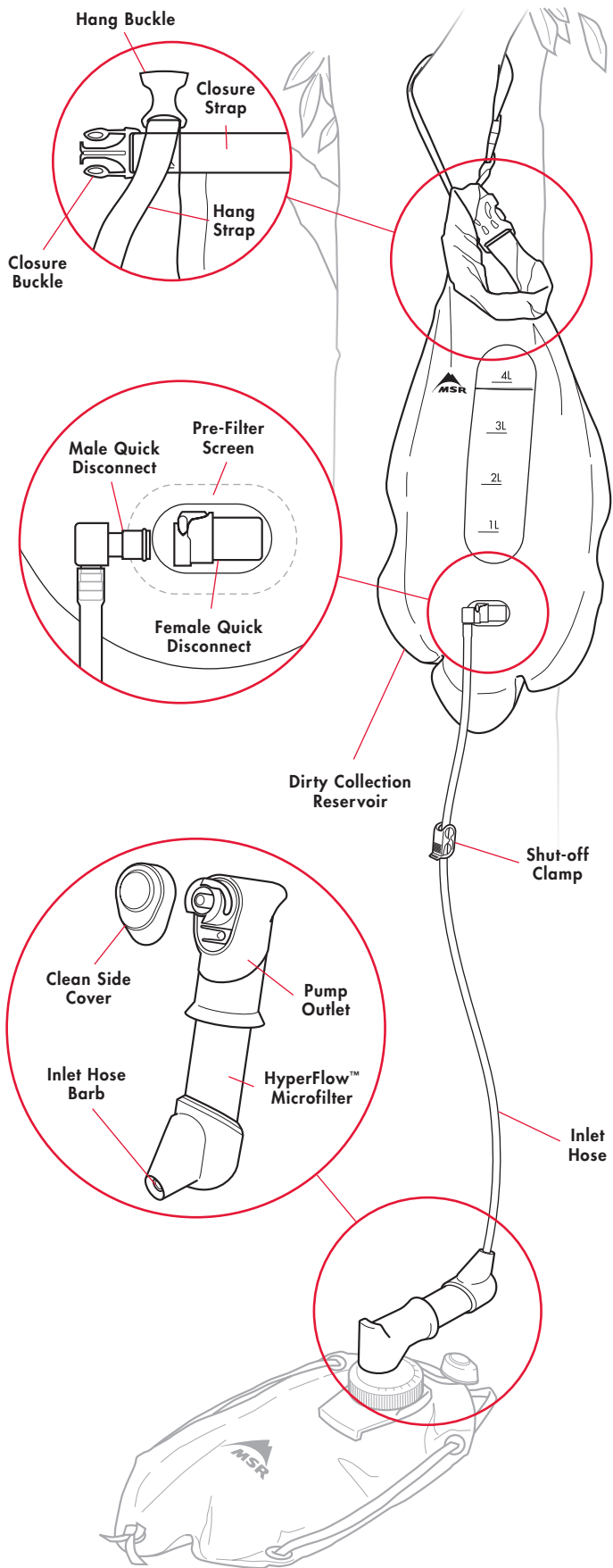
Cascade Designs, Inc.
4000 First Avenue South, Seattle, WA 98134 USA
1-800-531-9531 or 206-505-9500
www.msrgear.com
info@cascadedesigns.com



RECYCLED | RECYCLABLE

Printed on 50% Recycled (30% PCR) Paper. Processed Chlorine/Acid Free.

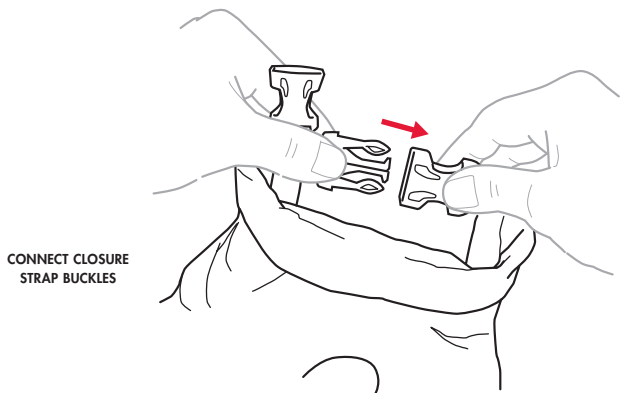
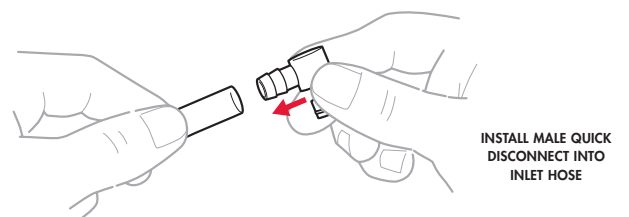
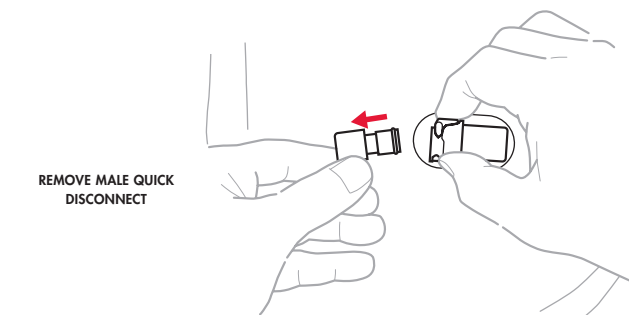
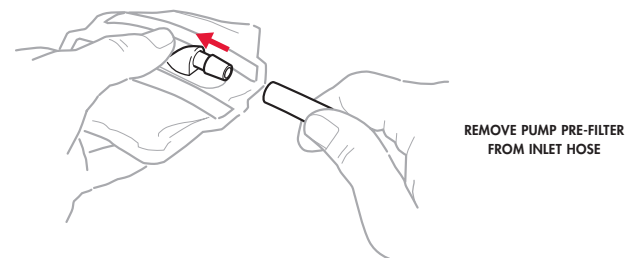
159813-1



1 PREPARE GRAVITY KIT SYSTEM

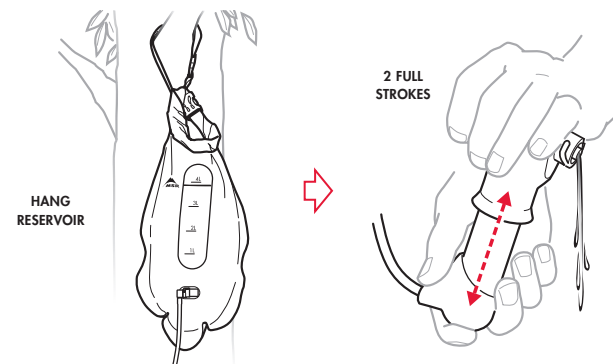
The HyperFlow Gravity Kit is designed for use with the MSR® HyperFlow™ Microfilter, which can be purchased from any local or online MSR dealer.

1. Remove the pump Pre-Filter from end of Inlet Hose.
 - ↳ Slide Shut-off Clamp onto Inlet Hose. (Shut-off Clamp should be open.) Opposite end of Inlet Hose is still attached to Inlet Hose Barb.
2. Remove Male Quick Disconnect from the Female Quick Disconnect on the Dirty Collection Reservoir.
 - ↳ Install the barbed end of the Male Quick Disconnect into the open end of the Inlet Hose.
3. Fill the Dirty Collection Reservoir with unfiltered water.
4. Fold Closure Strap on top of Dirty Collection Reservoir 4+ times to close bag.
 - ↳ Connect the buckles of the Closure Strap to each other.



2 PREPARE PUMP

1. Connect open end of Inlet Hose to Inlet Hose Barb.
2. Suspend the Dirty Collection Reservoir by its Hang Strap.
 - NOTE: Hang the Dirty Collection Reservoir high enough without putting tension on the Inlet Hose or pulling the clean container off the ground.
3. Reinstall the Male Quick Disconnect.
4. Position the pump vertically with the Pump Outlet on top.
5. Purge the pump with 2 full strokes to remove air and start water flow.

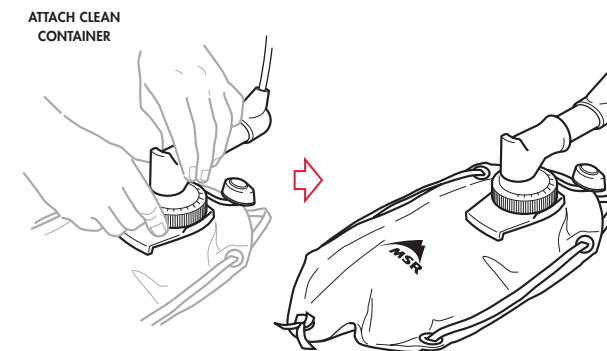


⚠ WARNING

Handle pump carefully because a damaged filter cannot prevent exposure to harmful microorganisms. Always test filter for damage if dropped outside of pump housing. Test filter for damage if pump is dropped 3 feet (0.9 meter) or greater onto a hard surface. (See Filter Test Guide, HyperFlow Microfilter kit contents.) If filter is damaged, discontinue use and replace Filter Cartridge.

3 FILTER WATER

1. Attach a clean container to the Outlet Adapter or Outlet Nipple on the pump. (See Tips.)
 - ↳ Install Clean Side Cover to Bottle Adapter Plug to prevent cross contamination when filtering.
2. Allow water to flow down from Dirty Collection Reservoir through pump into clean container.
 - To STOP water flow, close Shut-off Clamp.



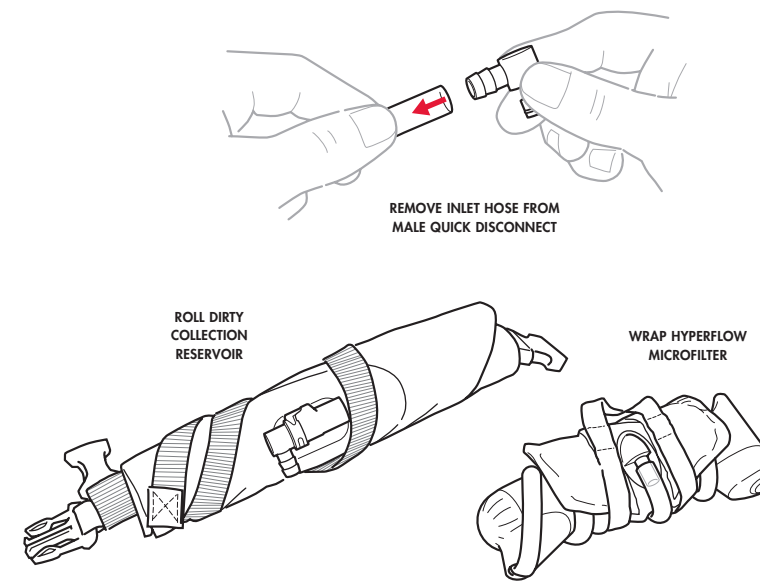
⚠ WARNING

When filtering water, never splash dirty or unfiltered water into clean container to avoid contamination.

4 PACK AND STORE GRAVITY KIT AND PUMP

1. Remove Inlet Hose from Male Quick Disconnect.
 - ↳ Remove Shut-off Clamp from Inlet Hose.
2. Purge any remaining water in pump and Inlet Hose with several pumps.
3. Reattach Clean Side Cover to the Outlet Adapter.
 - ↳ Reattach pump Pre-Filter to Inlet Hose.
4. Rinse Dirty Collection Reservoir with clear water (if possible).
 - ↳ Remove any debris from the Pre-Filter Screen.
 - ↳ Towel or shake off excess water.
5. Roll Dirty Collection Reservoir and place in its storage sack.
6. Wind Inlet Hose around Pump Cylinder.
 - ↳ Wrap Pre-Filter Closure Strap around Pre-Filter and Inlet Hose to secure pump assembly.
 - ↳ Place pump assembly in its storage sack.

After each trip and before long-term storage, backflush the Filter Cartridge. Always disinfect the filter before or after long-term storage, or after long-term use (15+ consecutive days). (See MSR® HyperFlow™ Microfilter instruction manual or visit www.msrgear.com for information.)



⚠ WARNING

Never store Filter Cartridge in cold temperatures (below 32 F/0 C) because freezing the filter will permanently damage the internal fibers. Always wash and dry pump filter parts. Disinfect filter thoroughly before long-term storage to prevent the growth of mold, mildew, and bacteria. Never use a dishwasher or microwave to disinfect parts because the high heat may damage or melt them.