

New Products for 2010

Fast & Light® Series

Haven™ Top Bag



The ultralight and innovative Haven Top Bag creates the ultimate synergy between mattress and bag for optimal comfort when traveling light. The unique wrap-around design with elasticized opening saves weight and packs up small by eliminating zippers and unnecessary insulation on the underside of the bag where it integrates with the mattress. The 624 g / 1 lb. 6 oz. Haven Top Bag combines premium 700-fill down with a full hood, foot box and wrap-around coverage for superior draft control, while utilizing inherent mattress warmth to ultimately achieve an EN-13537 rating of -6°C / 20°F. It can be secured to any mattress with easy-to-use straps (included), used without straps in warmer weather, or fit inside with a tapered Therm-a-Rest ProLite™ Series mattress for maximum warmth.

Regular

Dimensions: 178 cm / 5 ft. 10 in.

Weight: 624 g / 1 lb. 6 oz.

Retail USD: \$239.95

Large

Dimensions: 193 cm / 6 ft. 4 in.

Weight: 695 g / 1 lb. 8 oz.

Retail USD: \$249.95

Color: Grey

Release Date: January 2010

Storage Bag & Stuff Sack Included

Camp & Comfort™ Series

LuxuryMap™



NEW The ultra-comfortable LuxuryMap self-inflating mattress takes outdoor sleeping to a new level of luxury thanks to advanced pressure mapping technology and innovative die-cut foams. Used extensively in medical and industrial applications, digital pressure mapping technology was utilized in the design of the LuxuryMap mattress to analyze a range of body types in different sleep positions and to identify common areas of high and low pressure. By varying the density of die-cut foam perforations—more perforations in high pressure areas to alleviate sore spots and fewer perforations in low pressure areas to provide extra support—the LuxuryMap mattress provides a more even and supportive sleep surface that reduces tossing and turning, ensuring a restful night outdoors. The customized foam design also reduces volume and waste, making the mattress easier to pack and carry.

Regular

Dimensions: 51 x 183 cm / 20 x 72 in.
Weight: 1550 g / 3 lbs. 7 oz.
Retail USD: \$99.95

Large

Dimensions: 63 x 196 cm / 25 x 77 in.
Weight: 2040 g / 4 lbs. 8 oz.
Retail USD: \$129.95

X-Large

Dimensions: 76 x 196 cm / 30 x 77 in.
Weight: 2470 g / 5 lbs. 7 oz.
Retail USD: \$149.95

R-Value: 6.8
Thickness: 7.6 cm / 3 in.
Color: Iris
Release Date: January 2010

Stuff Sack Included

Camp n' Carry™ Sack



NEW This wide, side-loading stuff sack provides the most efficient design for packing up and moving camp. It features a generous cover flap that opens the full length of the sack, adjustable compression closures that accommodate a wide range of mattresses and sleep system components, and a convenient shoulder strap for easy carrying. The Camp n' Carry Sack is the perfect upgrade to the basic stuff sacks now included with the Therm-a-Rest BaseCamp™ and LuxuryMap™ mattresses.

Regular

Dimensions: 19 x 58 cm / 7.5 x 23 in.
Weight: 198 g / 7 oz.
Fits: 20" mattresses
Retail USD: \$ 25.95

Large

Dimensions: 23 x 71 cm / 9 x 28 in.
Weight: 227 g / 8 oz.
Fits: 25" mattresses
Retail USD: \$27.95

Extra Large

Dimensions: 27 x 86 cm / 10.5 x 34 in.
Weight: 270 g / 9.5 oz.
Fits: 30" mattresses
Retail USD: \$29.95

Color: Navy
Release Date: January 2010

DreamTime™



Now featuring contour-hugging memory foam, the ultra plush DreamTime mattress provides unparalleled support and comfort. A removable, machine-washable, ultrasoft microfiber cover provides next-to-skin softness and encases two luxurious layers: a self-inflating mattress topped with a layer of body-hugging memory foam, ultimately providing 3.5 impressive inches (9 cm) of comfort and cushioning support for a truly decadent rest. Compression straps and carry handle allow for easy packing and transporting.

Large

Dimensions: 63 x 196 cm / 25 x 77 in.
Weight: 2890 g / 6 lbs. 6 oz.
Retail USD: \$189.95

Extra-large

Dimensions: 76 x 196 cm / 30 x 77 in.
Weight: 3490 g / 7 lbs.11 oz.
Retail USD: \$209.95

R-Value: 9.0
Thickness: 9 cm / 3.5 in.
Color: Eggplant
Release Date: January 2010

Storage Bag Included

BaseCamp™



The most economical self-inflating mattress in the deluxe Camp & Comfort series is now even lighter and more compact. The use of an expanded foam provides exceptional comfort and warmth yet reduces material by up to 25%, making for an easier load and a lighter impact on the environment.

Regular

Dimensions: 51 x 183 cm / 20 x 72 in.
Weight: 1150 g / 2 lbs. 9 oz.
Retail USD: \$69.95

Large

Dimensions: 63 x 197 cm / 25 x 77 in.
Weight: 1590 g / 3 lbs. 8 oz.
Retail USD: \$79.95

Extra Large

Dimensions: 76 x 196 cm / 30 x 77 in.
Weight: 1810 g / 4 lbs.
Retail USD: \$99.95

R-Value: 5.0
Thickness: 5 cm / 2 in.
Color: Blueberry
Release Date: January 2010

Stuff Sack Included

Camp™ Seat



With the benefit of advanced pressure mapping technology, the enhanced Camp Seat creates the perfect profile of high and low-density foams to provide the utmost comfort.

Dimensions: 41 x 41 cm / 16 x 16 in.
Weight: 340 g / 12 oz.
Thickness: 8 cm / 3 in.
Retail USD: \$29.95

Color: Blueberry
Release Date: January 2010

Compressible Pillow



NEW COLORS

Filled with the extra foam punched out in the Therm-a-Rest mattress manufacturing process and encased in plush microfiber for next-to-skin comfort, the lightweight

Compressible Pillow is super-cozy and eco-friendly. The foam pillow expands for plush comfort and support and easily rolls into a built-in pocket for convenient packing and storage. Perfect for everyone from trekkers to car campers to airline travelers, the Compressible Pillow is now available in four new color options (Mossy Oak Break-Up™ and Advantage Max 4HD™ camo patterns still available).

Small

Dimensions: 30 x 41 cm / 12 x 16 in.
Weight: 198 g / 7 oz.
Retail USD: \$17.95

Medium

Dimensions: 36 x 46 cm / 14 x 18 in.
Weight: 225 g / 9 oz.
Retail USD: \$22.95

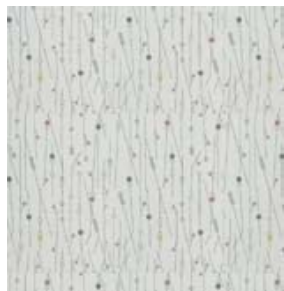
Large

Dimensions: 41 x 58 cm / 16 x 23 in.
Weight: 340 g / 12 oz.
Retail USD: \$27.95

New Colors: Vermilion, Denim, Bramble, Geometric,
Existing Colors: Mossy Oak Break-Up and Advantage Max 4HD, Desert Sun
Release Date: January 2010

Trek & Travel™ Series

Fitted Sheet



REDESIGNED

NEW PRINT

The soft polyester Fitted Sheet is sized to fit snugly around a Therm-a-Rest mattress for next-to-skin comfort. New design features including open corners and a single quick release strap across the bottom make it easier to put on the mattress than before. Snap design allows attachment of the Ventra™ Down Comforter or the Tech Blanket as well as easy coupling of mattresses. Available in a new print and a new Extra-Large size to fit 30-inch wide (76 cm) Therm-a-Rest mattresses.

Medium

Dimensions: 51 x 168 cm / 20 x 66 in.
Weight: 170 g / 6 oz.
Retail USD: \$20.95

Regular

Dimensions: 51 x 183 cm / 20 x 72 in.
Weight: 181 g / 6.5 oz.
Retail USD: \$22.95

Large

Dimensions: 63 x 196 cm / 25 x 77 in.
Weight: 225 g / 8 oz.
Retail USD: \$24.95

Extra-Large

Dimensions: 76 x 196 cm / 30 x 77 in.
Weight: 312 g / 11 oz.
Retail USD: \$29.95

New Print: Reeds
Existing Colors: Stripe, Grey
Release Date: January 2010

###