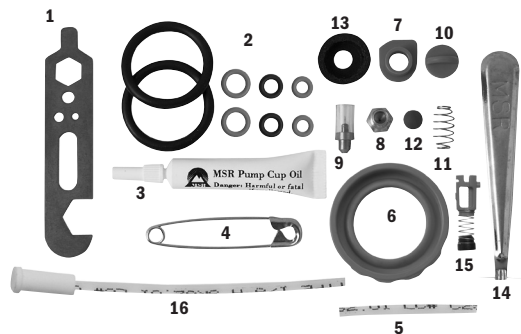


EXPEDITION SERVICE KIT MSR SIMMERLITE™ STOVE I N S T R U C T I O N S



Included in this kit:

1. Jet & Cable Tool
2. O-Rings. See Sizing Chart
3. Pump Cup Oil
4. Safety Pin
5. Air Tube
6. Pump Seal
7. Fuel Tube Bushing
8. Spare Jet
9. Shaker Needle (with cover)
10. Check Valve Plug
11. Check Valve Spring
12. Check Valve Ball
13. Pump Cup
14. Jet Cleaning Wire
15. Check Valve Assembly
16. Dip Tube with Filter

Kitinhalt:

1. Düsen- und Kabelwerkzeug
2. O-Ringe. Siehe Größentabelle
3. Pumpenlageröl
4. Sicherheitsnadel
5. Luftschlauch
6. Pumpendichtung
7. Brennstoffleitungsmuffe
8. Ersatzdüse
9. Düsennadel (mit Hülle)
10. Rückschlagventilpfropfen
11. Rückschlagventilfeder
12. Rückschlagventilkugel
13. Pumpenlager
14. Düsenreinigungsdraht
15. Rückschlagventilbaugruppe
16. Tauchrohr mit Filter

Ce kit contient les éléments suivants :

1. Outil multifonction
2. Joints d'étanchéité. Voir le tableau des dimensions
3. Huile pour coupelle de pompe
4. Épingle de sûreté
5. Tube d'air
6. Joint de la pompe
7. Bague du tube de carburant
8. Gicleur de rechange
9. Aiguille de secouage (avec étui protecteur)
10. Soupape de la valve anti-retour
11. Ressort de la valve anti-retour
12. Bille de la valve anti-retour
13. Coupelle de la pompe
14. Fil de nettoyage du gicleur
15. Ensemble de la valve anti-retour.
16. Tube plongeur avec filtre

このキットに含まれているもの :

1. ジェット & ケーブルツール
2. Oリング。サイズ表を参照してください
3. ポンプカップオイル
4. 安全ピン
5. エアチューブ
6. ポンプシール
7. 燃料チューブブッシング
8. 予備のジェット
9. シェーカーニードル (カバー付)
10. チェックバルブプラグ
11. チェックバルブスプリング
12. チェックバルブボール
13. ポンプカップ
14. ジェットクリーニングワイヤ
15. チェックバルブアセンブリ
16. フィルタ付DIPチューブ



ENG

WARNING

To avoid injury, read, understand, and follow all instructions and warnings in this manual before attempting any stove maintenance.

Inspect Pump Seal and O-rings regularly. Replace any seals that are cracked, worn, or damaged. Seals that are in poor condition may result in leaking fuel and present an extreme fire hazard. Fire hazards pose a serious risk of property damage, personal injury, and death. Always check for leaking fuel. If leaking fuel is found, DO NOT USE STOVE. See **O-Ring Sizing Chart** to identify seals.

Note: When temperatures are below -24° C (-10° F), O-rings may become stiff and break, resulting in fuel leaks.

Don't use your stove in any way other than what is described in your stove instructions. **Don't** alter the stove or use any non-MSR parts, including O-rings. **Don't** disassemble beyond what is described in these instructions. **Don't** use the stove if any parts are missing or broken. **Don't** interchange stove or pump parts from different models.

Failure to follow these warnings and instructions may result in serious injury or death.

STOVE MAINTENANCE

Deposits in the Jet and Fuel Line reduce fuel flow and impair stove performance. Minor deposits in the Jet can usually be cleared with the Shaker Needle (C). More extensive deposits may require extensive cleaning of the Jet or Fuel Line.

QUICKLY CLEARING THE JET

1. Close the Control Valve firmly and allow stove to cool.
2. Shake the stove up and down. An audible "rattle" is proof that the Shaker Needle (C) is functioning as designed.
3. Restart the stove. If performance does not improve, See **EXTENSIVE CLEANING OF THE JET AND FUEL LINE**.

EXTENSIVE CLEANING OF THE JET AND FUEL LINE

1. Remove the Top (A) and Bottom Screw (D) with the Jet & Cable Tool. See **Illustration 1**.
2. Remove Fuel Line Leg Clip (J) from leg.
3. Rotate the Pot Supports back to the packed position.
4. Pull the Burner Head/Mixer Tube assembly away from the Pot Support/Overflow Pan assembly.
5. Remove the Fuel Line Elbow (I) from the Mixer Tube (M). See **Illustration 1**.
6. To remove the Jet, invert the Burner Head/Mixer Tube assembly and use it to hold the Fuel Line Elbow. See **Illustration 2**. Unscrew the Jet using Jet & Cable Tool.

IMPORTANT! Do not bend Generator Tube (K) while loosening the Jet.

7. Remove the Shaker Needle (C). Clear the Jet orifice with the Jet Cleaning Wire tool.
8. Pull the Cable (F) out of the Fuel Line using the Jet & Cable Tool. See **Illustration 3**.

Note: If the Cable cannot be removed, spray a common lubricant such as WD-40™ inside the Fuel Line Elbow and let soak for approximately 15 minutes before removal. (Pump cup oil may be used instead of a lubricant spray).

9. Reinsert the Cable. Using short strokes, push the cable back and forth inside the Fuel Line approximately 20 times.
10. Flush the Fuel Line. With the Cable, Jet, and Shaker Needle removed, insert the end of the Fuel Line into the pump and fuel bottle. Pressurize the fuel bottle with 10-15 plunger strokes. Open Control Valve fully and flush 2-3 table spoons (1-2 oz.) of fuel through the Fuel Line into an appropriate container.

Warning: When flushing the fuel line, keep away from heat, sparks, and flame. Safely dispose of fuel when flushing is complete.

PUMP MAINTENANCE

WARNING! Always check for leaking fuel, especially after any stove or pump maintenance and replacement of seals. Check for leaks near every seal, including the Pump Seal, Fuel Line connection, Control Valve area, Pump Plunger, and at the Flame Adjuster on the Stove. If leaking fuel is found, **Do Not Use Stove**. Repair it or send it to your MSR retailer or MSR Product Service Center for repairs.

INSPECTING AND REPLACING SEALS

Fuel Tube O-ring

1. Remove plunger. See **Lubricating the Pump Cup**.
2. Using the Jet & Cable Tool, rotate the Fuel Tube Bushing (a) counterclockwise and remove.
3. Remove the Fuel Tube O-ring (b) using the end of the fuel line or a safety pin.
4. Inspect and replace if worn or damaged.

Control Valve O-ring

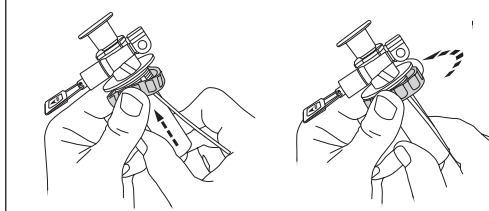
1. Using the Jet & Cable Tool, loosen the Stop Nut (c).
2. Unscrew and remove the Control Valve (d).
3. Inspect and replace O-rings if worn or damaged (d).

Pump Seal/Fuel Bottle O-ring

1. The Pump Seal/Fuel Bottle O-ring (e, n) surrounds the pump body.
2. (**Pump A**) Remove the Fuel Bottle O-ring (n) with safety pin. (**Pump B**) Remove the Pump Seal (e) with your thumbs.
3. Replace Pump Seal/Fuel Bottle O-ring if worn or damaged. See **Illustration 4**. Ensure that top edge of Pump Seal seats securely over rim on pump body. A small amount of pump cup oil or soapy water can be used to help seat the seal.

ILLUSTRATION 4

Replacing Pump Seal (Pump B)



LUBRICATING THE PUMP CUP

PUMP A

Remove the Pump Plunger

1. Rotate the shaft of the pump plunger (f) counterclockwise, removing the plunger bushing (g) from the body of the pump.
2. Rub MSR Pump Cup Oil (or other mineral-based oil or saliva) onto Pump Cup (h).

Replace the Pump Plunger

1. Carefully insert the pump cup into the plunger cylinder. If the pump cup is leather, ensure that it does not fold or deform.
2. Rotate the plunger bushing clockwise until it locks in place.

Note: To replace Pump Cup, firmly press new Pump Cup onto the Plunger tip.

PUMP B

Note: Instructions showing 1, 2, and 3 arrows and "OPEN HERE" position are printed on the Plunger Shaft. See **Illustration 5** to identify pump parts.

1. Push Plunger (f) in halfway so that Arrow 1 is lined up with the Plunger Bushing (g).
2. Twist the Plunger counterclockwise (Arrow 2) until you hear it click free.
3. Pull out the Plunger (Arrow 3).
4. Rub MSR Pump Cup Oil (or other mineral-based oil or saliva) onto the Pump Cup (h).
5. To reinsert: Hold the Plunger Shaft and align the top of the Plunger Bushing with Arrow 1 on the Plunger Shaft.
6. Align the Plunger Bushing Legs with the Locking Holes (i) in the Pump Body.
7. Push the Plunger and Plunger Bushing into the Pump Body until the Legs snap into the locking holes.

Note: To replace Pump Cup, firmly press new Pump Cup onto the Plunger tip.

CLEANING THE CHECK VALVE

If the stove does not maintain pressure, the Check Valve may not be functioning properly.

1. Turn the Check Valve (j) counterclockwise and remove the Check Valve Assembly.
2. Clean any debris from the seal and cavity.
3. Reinsert the Check Valve Assembly.

Note: Pump A parts are loose. Do not drop.

ILLUSTRATION 1 | FIGURE 1 ABBILDUNG 1 | 図 1

- | | |
|--------------------|---------------------------------------|
| A Top Screw | A Vis supérieure |
| B Pot Support Legs | B Pattes du support de casserole |
| C Shaker Needle | C Aiguille de secouage |
| D Bottom Screw | D Vis inférieure |
| E Overflow Pan | E Coupelle de trop-plein |
| F Fuel Line Cable | F Câble de la conduite de carburant |
| G Catch Arm | G Crochet de verrouillage |
| H Fuel Line | H Conduite de carburant |
| I Fuel Line Elbow | I Coude de la conduite de carburant |
| J Fuel Line Clip | J Attache de la conduite de carburant |
| K Generator Tube | K Tube du générateur |
| L Jet | L Gicleur |
| M Mixer Tube | M Tube mélangeur |
| N Burner Head | N Tête de brûleur |

- | | |
|-------------------------------------|---------------|
| A Obere Schraube | A 上部ねじ |
| B Tophalterungsbeine | B 五徳レッグ |
| C Düsennadel | C シェーカーニードル |
| D Untere Schraube | D 下部ねじ |
| E Überlaufbehälter | E 受け皿 |
| F Brennstoffleitungskabel | F 燃料パイプケーブル |
| G Sperrhaken | G キャッチアーム |
| H Brennstoffleitung | H 燃料パイプ |
| I Winkelstück der Brennstoffleitung | I 燃料パイプエルボー |
| J Brennstoffleitungscip | J 燃料パイプクリップ |
| K Generatorschlauch | K ジェネレーターチューブ |
| L Düse | L ジェット |
| M Mischrohr | M ミキサーチューブ |
| N Brennkopf | N バーナーヘッド |

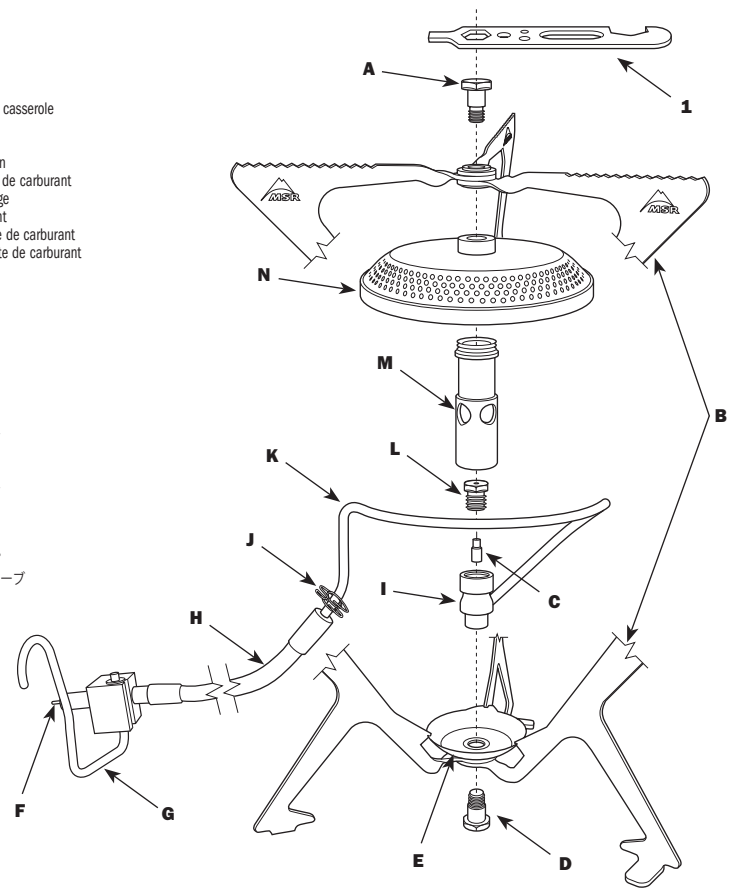


ILLUSTRATION 2 | FIGURE 2 ABBILDUNG 2 | 図 2

Using Mixer Tube to Remove Jet
Utilisation du tube mélangeur pour retirer le gicleur
Verwenden des Mischrohrs zum Entfernen der Düse
ジェットを取り外すためにミキサーチューブを使用

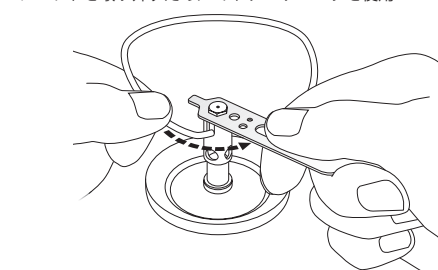
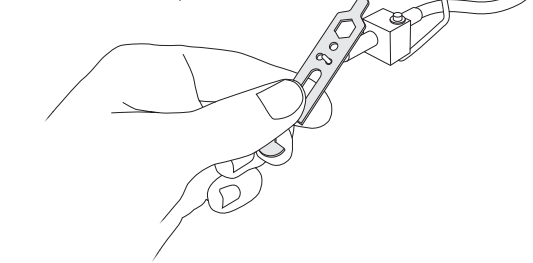


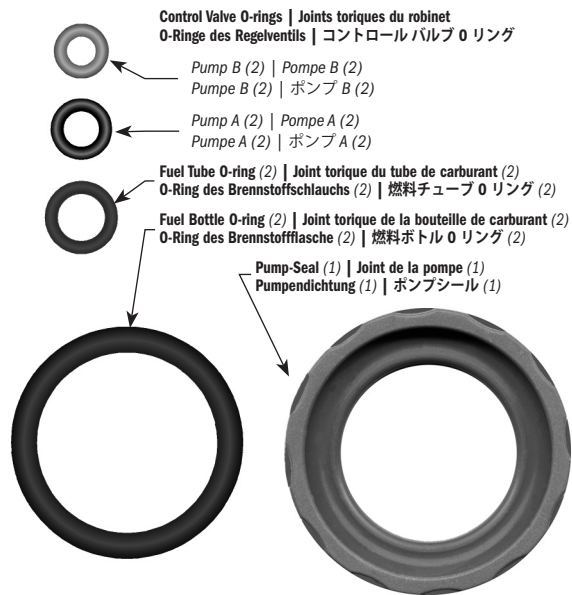
ILLUSTRATION 3 | FIGURE 3 ABBILDUNG 3 | 図 3

Removing the Cable | Démontage du câble
Entfernen des Kabels | ケーブルを取り外す



O-RING SIZING CHART | TABLEAU DES DIMENSIONS DES JOINTS TORIQUES TABELLE DER O-RINGGRÖßEN | O リングサイズ表

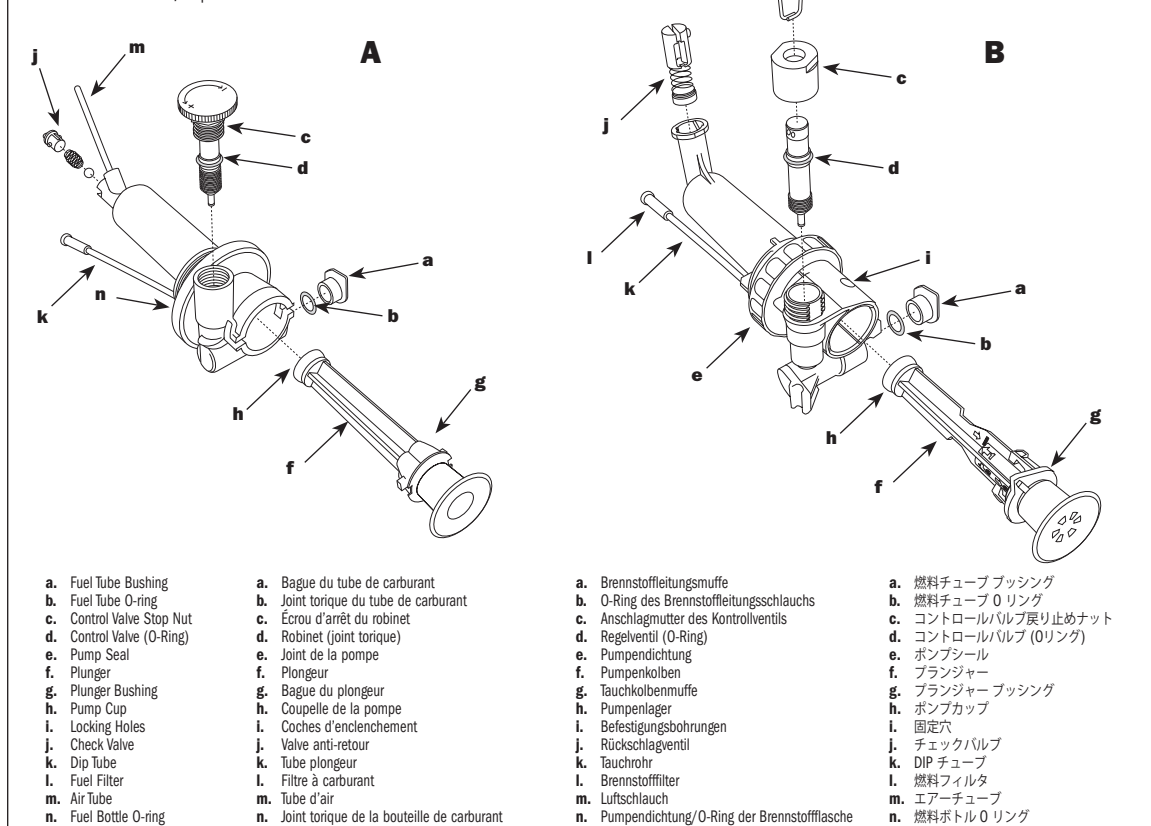
Actual Size | Actual Size | Tatsächliche Größe | 実際のサイズ



Lay actual O-Ring onto chart to properly identify
Placez le joint torique sur ce tableau afin de l'identifier correctement
Legen Sie den O-Ring auf die Tabelle, um ihn richtig zuzuordnen
実際の O リングを表の上において正確に識別する

ILLUSTRATION 5 | FIGURE 5 ABBILDUNG 5 | 図 5

Pump Exploded View | Vue éclatée de la pompe
Detailansicht der Pumpe | ポンプ分解図



Mountain Safety Research
4000 First Avenue South
Seattle, WA 98134 U.S.A.
Phone: 800-531-9531
206-505-9500
www.msrgear.com

